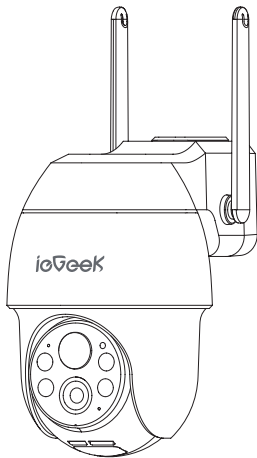




PTZ

Battery Security Camera

USER MANUAL



Validate your warranty within **7** days and
get **2**-year extended warranty on
your ieGeek security products.



Email: service@iegeek.com

Technical Support

If you need help, please contact ieGeek before returning your product. Most questions can be answered through our online support center at

<http://www.iegeek.com> or our after-sale mailbox at service@iegeek.com.

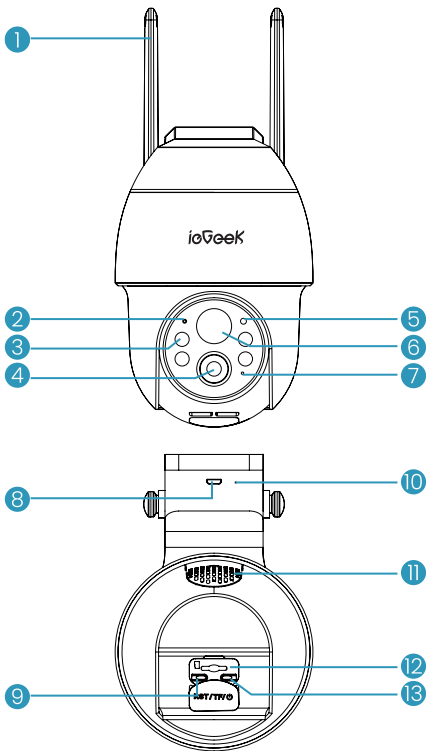
Warning Tip:

- Before connecting this camera to the WiFi, please ensure the Wi-Fi signal strength is over 85% to keep a good Wi-Fi signal.
- This wireless camera supports events recording when Wi-Fi is disconnected.

ENGLISH

01 / Camera Introduction.....	1
02 / APP Installation and Account Registration	4
03 / How to Add a Camera to APP	6
04 / Charge the Battery.....	11
05 / Installation Guides.....	12
06 / Notes on PIR Motion Sensor	14
07 / Important Notes on Reducing False Alarms.....	15
08 / FAQs	15

01 / Camera Introduction



1	Wifi Antenna
2	Working Status Light
3	Spotlights & IR Light
4	Lens
5	IR-CUT
6	PIR
7	Microphone
8	Charging Port
9	Power Button
10	Charging Indicator: Red : Charging Blue :Fully Charged
11	Speaker
12	Memory Card Slot
13	Reset Button

Power Button	Press and hold for 5s for power on/off the camera
Reset Buton	Press and hold for 5s until hearing ' Boogu ' to reset or restore to factory setting
Memory Card Slot	Support local Memory card storage (up to 128G)
Charging Indicator	Red means charging, blue means fully charged
Working Status Light	Solid on red: Network is abnormal
	Slow flickering red: Awaiting Wi-Fi
	connection and start adding devices Fast flickering red: Wi-Fi connecting
	Solid on blue: Wi-Fi connected successfully, the camera running normally
Dedicated Charging Port	Use 5V2A power adapter to charge this camera

02/ APP Installation and Account Registration

2.1 Download 'ieGeek Cam' APP

Method 1: Download 'ieGeek Cam' and 'CloudEdge' APP from APP Store (iOS and Android);

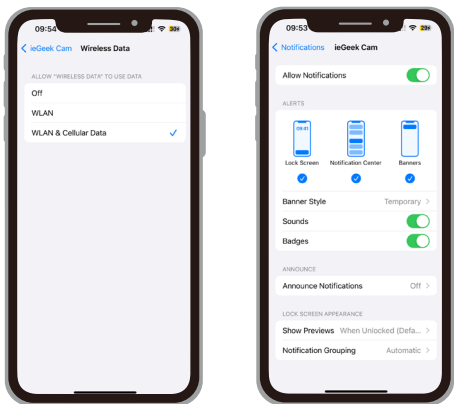
Method 2: Scan 'ieGeek Cam' APP QR code to download it.



ieGeek Cam

Tips: Please turn on 2 below permissions while using this APP for the first time.

1. Allow 'ieGeek Cam' APP to access mobile cellular data and wireless LAN or it will fail to add IP camera.
2. Allow 'ieGeek Cam' APP to receive pushed message or the phone will not receive alarm push when motion detection or audible alarm is triggered.



2.2 Register Account

New users need to register by email. The concrete steps are as following:

1. Click "Register"
2. Follow the steps to complete the registration of the account
3. Log in.

Note:

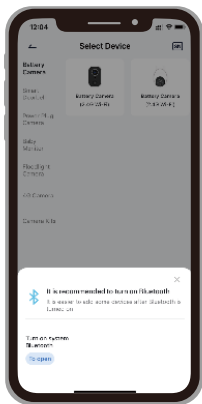
- When registering a new account, please choose the region which you are actually in and correct country code. (Different registered regions can't share the camera.)
- Please choose to register by e-mail.

03/How to Add a Camera to APP

Before Using:

1. Please insert the Micro Memory card before power on, otherwise, the Memory card can not be detected.
2. Put the camera and smart phone 1-3 ft (30-100 cm) away from the router to set Wi-Fi.
3. Make sure that the camera is using 2.4GHz Wi-Fi.

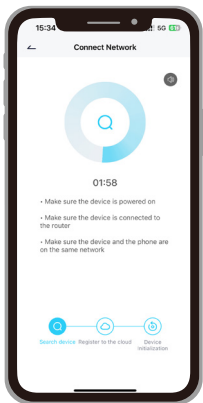
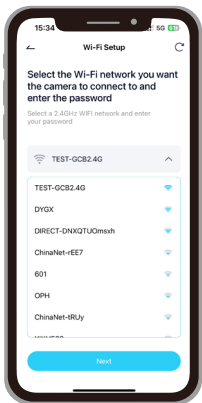
Wi-Fi Connection Steps



On the Homepage , tap "Add" or "+" in the upper right corner, tap "Add Device"

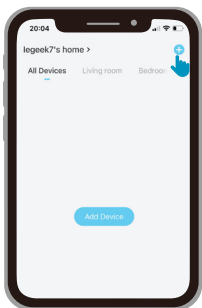


If the Bluetooth of cellphone doesn't turn on, the app will show a pop-up, please allow it to turn on Bluetooth

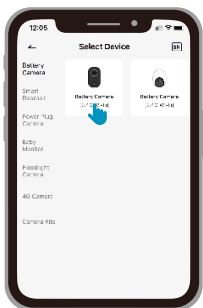


After Bluetooth turns on, the app will automatically search for devices that are on and not bound. Select the device you want to connect in the search list.

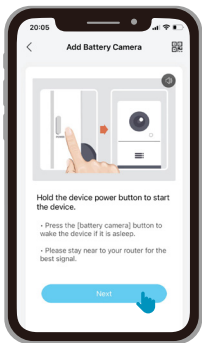
Method 2: Scan Code to Connect



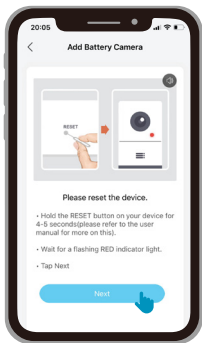
Tap '+' to Add Device



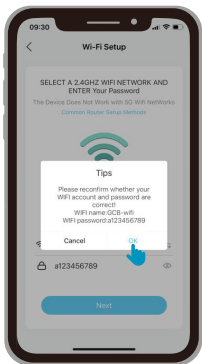
Select Battery Camera



Power on Camera



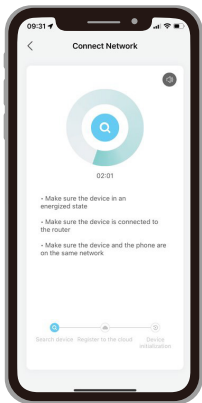
Reset Device



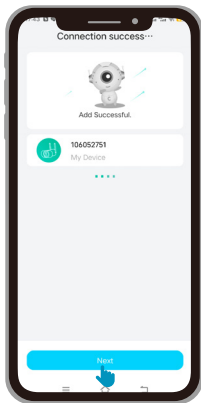
Input Wi-Fi Password



Scan QR Code



Wait for
Connection



Device Added

(Note: If it can't be powered on, please plug in DC 5V 2A power adapter to charge the camera for 15min first)

My camera fails to connect Wi-Fi?

1. Before adding a device, make sure that the device is in the state of slow flashing red light. If the indicator status is abnormal, please restore the device to factory settings (long press and hold the device RESET button until you hear the 'boogu' sound)
2. Please make sure the Wi-Fi the camera connected is 2.4GHz. In our experience, network connection is failed in most cases, which is caused by that users used 5GHz WIFI.
3. Make sure the password correction of the Wi-Fi. (Note; the password of the WiFi cannot include single quote, underline, space and virgule (/)).
4. Check the number of the devices your router connected. In

general, the router has connection limits. Once the devices that your router connected exceed its max limit numbers, other devices will not connect to the router.

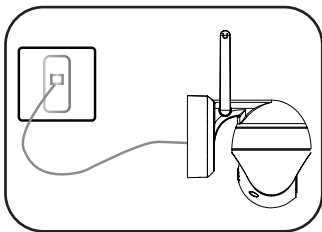
5. Make sure the QR code on the phone screen is normal and the distance between the phone and the camera lens is 10-15cm (3.9-5.9inch) during the scanning process.
6. Check the current location has good wifi coverage and a stable network (wifi signal is greater than 80%);
7. Avoid using wifi extenders;
8. After checking the above information, if the camera cannot connect to the WiFi, please try to re-download the APP, reset the camera and restart the router, and then add the camera again.
9. If you tried all steps, but still no luck, please message your order and problem to service@iegeek.com.

04/Charge the Battery

Charge the battery with a 5V 2A power adapter.

- The battery is a built-in battery and cannot be removed.

Charge the battery with the ieGeek Solar Panel.

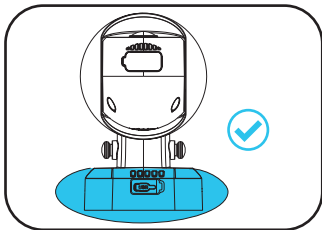


For the weatherproof performance, always cover the dedicated charging port with the rubber plug after finishing charging the battery.

Charging Indicator:

Red LED: Charging

Blue LED: Fully Charged



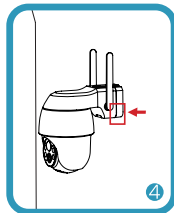
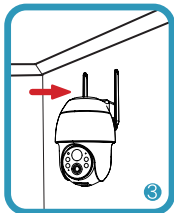
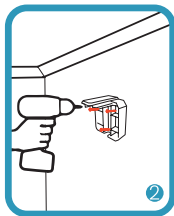
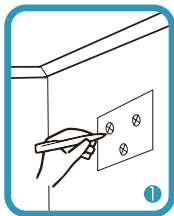
05/Installation Guides

Installation Steps:

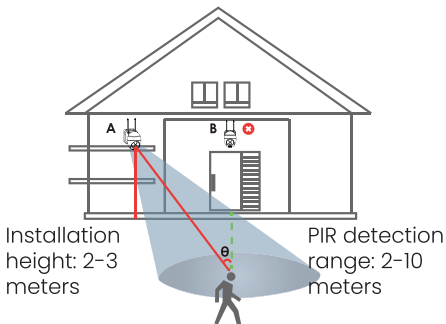
1. Mark the perforated position on the wall.
2. Fix the bracket to the wall with screws and expansion screws.
3. Align the camera base with the bracket snap fastening and push inward, hear the "click" sound that is stuck.
4. Note: The bracket snap and the camera base should be overlapped.

Screws: 1/4 inch screws*3

Expansion screws *3



- Install the camera 2-3 meters (7-10 ft) above ground. The detection range of the motion sensor would be maximized at such a height.
- For effective motion detection, please install the camera angularly.



NOTE: If a moving object approaches the PIR sensor vertically, the camera may fail to detect motion.

06/Notes on PIR Motion Sensor

PIR Sensor Detection Range The PIR detection range can be customized to meet your specific needs. You may refer to the following table to set it up in Device Settings via CloudEdge App.

Sensitivity	Detection Distance (For moving and living objects)
Level 1-3 (Low)	Up to 2-5 meters
Level 4-7 (Med)	Up to 5-8 meters
Level 8-10 (High)	Up to 8-10 meters

07 / Important Notes on Reducing False Alarms

- Do not face the camera towards any objects with bright lights, including sunshine, bright lamp lights, etc.
- Do not place the camera near any outlets, including the air conditioner vents, humidifier outlets, the heat transfer vents of projectors, etc.
- Do not install the camera in places with strong wind.
- Do not face the camera towards a mirror.
- Keep the camera at least 1 meter away from any wireless devices, including WiFi routers and phones in order to avoid wireless interference.

08 / FAQs

The device prompts ofine?

1. Check whether the equipment is in the power-on state, and observe whether the working light of the equipment is on normally.
2. Confirm that the current location has good wifi coverage and the network is stable, make sure that the wifi signal is above 75%. You can try to use the third-party wifi analysis tool "wifi analyzer" to analyze the current wifi signal coverage and interference status. If the coverage is poor and the interference is large, it is recommended to replace the camera installation position or adjust the router position or use a second-stage router.
3. If the device is located far away from the router, which

results in the inability to obtain a good Wi-Fi signal, it is recommended to move the router to a closer place or ensure the Wi-Fi signal strength is to be over than 85% to improve the Wi-Fi performance of the home.

4. Delete the camera from your CloudEdge account and add it again after resetting the device. Check whether the device firmware and application program are the latest version.
5. Avoid using wifi extenders.

Update router or Wi-Fi password?

Delete the camera from your CloudEdge account. After resetting the device, use the new Wi-Fi and password to add it again.

Alarm push frequently?

1. In the app, lower the sensitivity of the motion detection alarm.
2. Check whether there are objects that interfere with and trigger the PIR sensor in the field of view of the device, such as the outdoor unit of the air conditioner, driving cars, passing pedestrians, etc. The angle of the device can be adjusted appropriately to avoid these easily disturbing objects
3. Turn on "human motion detection" and use humanoid algorithm to filter useless alarms.

Device doesn't detect motion events

1. In the case of unstable network, the message may not be pushed in time after the PIR is triggered. In this case, you can first confirm the network status and remove the camera to verify and confirm in an environment with good network coverage.
2. Inappropriate installation position will result in PIR not triggering and not detecting. If the position is too high, the object is too far away, or the object is too small, the camera will not trigger, try to adjust the installation position according to the trigger requirements for many times.

Memory card not recognized

1. Support capacity is 16~128GB TF card.
2. Before use, make sure to format the TF card as FAT32 or exFAT file system on the computer, then insert it into the camera, and finally perform the format memory card operation on the camera again.
3. If the TF card is not recognized during use, it is generally a quality problem of the TF card, and it is necessary to replace the memory card with more stable reading and writing".

Fast power consumption

1. In the case of poor wifi coverage (such as signal is below 75%), which will increase power consumption.
2. The PIR trigger frequency is high, and the power consumption will increase when the infrared light/white light is on at night;
3. The mobile phone often accesses the camera remotely, which will increase the power consumption.
4. For the first use, it is recommended to use the power to 10%, and then charge it to 100%, which is helpful for the health of the lithium battery.

For more detailed FAQs, please log in to the APP, search in "Me"- "FAQ"- "Help Document"- "Battery Camera"

FCC Statement

This equipment has been tested and found to comply with the limits for a Class B digital device, pursuant to part 15 of the FCC rules. These limits are designed to provide reasonable protection against harmful interference a residential installation.

This equipment generates, uses and can radiate radio frequency energy and, if not installed and used in accordance with the instructions, may cause harmful interference to radio communications. However, there is no guarantee that interference will not occur in a particular installation. If this equipment does cause harmful interference to radio or television reception, which can be determined by turning the equipment off and on, the user is encouraged to try to correct the interference by one or more of the following measures :

- Reorient or relocate the receiving antenna.
- Increase the separation between the equipment and receiver.
- Connect the equipment into an outlet on a circuit different from that to which the receiver is connected.

Consult the dealer or an experienced radio/TV technician for help. Responsible for compliance could void the user's authority to operate this equipment.(Example-use only shielded interface cables when connecting to computer or peripheral devices).

Any Changes or modifications not expressly approved by the party responsible for compliance could void the user's authority to operate the equipment. This equipment complies with Part 15 of the FCC Rules. Operation is subject to the following two conditions :

- (1)This device may not cause harmful interference, and ;
- (2)This device must accept any interference received, including interference that may cause undesired operation.

FCC Radiation Exposure Statement :

The equipment complies with FCC Radiation exposure limits set forth for uncontrolled environment. This equipment should be installed and operated with minimum distance 20cm between the radiator and your body.



Tiger-Zhou UG (haftungsbeschränkt)
 Leipzig HRB 37896 Shukowdr. 6 04347
 Leipzig, Sachsen, Deutschland
 Tiger-Zhou@web.de
 +4915216791470



Seal&Mew Accounting Ltd
 Electric Avenue Vision 25, London,
 Enfield EN3 7GD
 info@sealmew.net
 +447399648608



FR
 Vous êtes responsable de remettre
 tous les appareils électriques et
 électroniques usagés à des points
 de collecte correspondants.
 Pour en savoir plus :
www.quefairedesdechets.fr



FR
 Les piles
 et batteries
 se recyclent

A DÉPOSER
 EN MAGASIN

A DÉPOSER
 EN DÉPÔTÈRE

OU

Point de collecte sur www.quefairedesdechets.fr

ioGeek